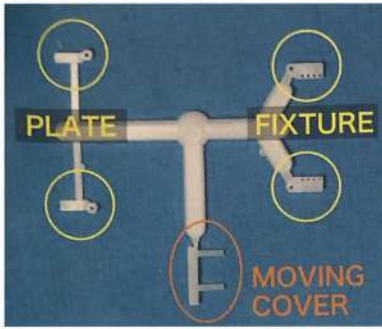
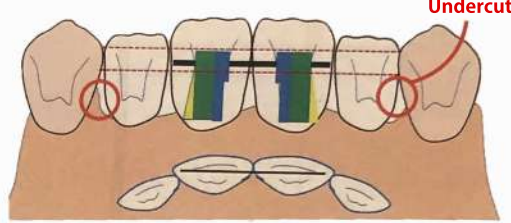


SWINGWEDGE ATTACHMENT

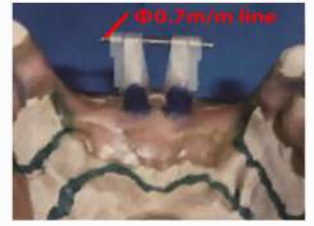
Process For Anterior Teeth



Positioning of Rotation Axis



Take retention by bases ' fitting in the undercuts (gum part) of adjacent residual teeth.



Set SWINGWEDGE ATTACHMENT on the alveolar crest.



After casting

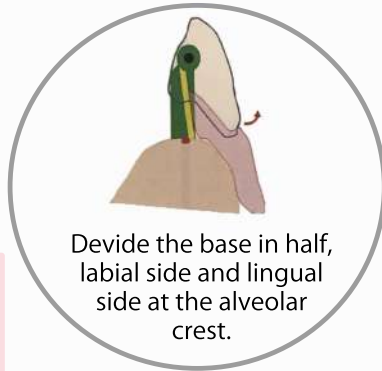


The Lingual surface of the four anterior teeth arrangement



FIXTURE and PLATE
(Base Connector)

For Anterior Teeth
contains 4 SETS ¥11,500

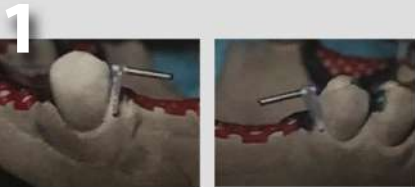


Divide the base in half, labial side and lingual side at the alveolar crest.

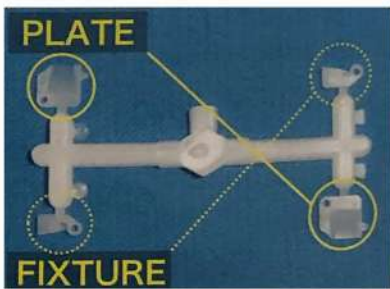
↓ You can also make moving-base type!!



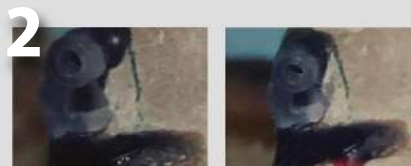
Process For Prosterior Teeth



1 Decide the position of the FIXTURE(s) when you wax-up the base. Confirm the PLATE(s) certainly fit in the distal undercut. When you adjust the contact with teeth surface using resin, you need to keep a space for retention beads.



For Prosterior Teeth
contains 4 SETS ¥10,000



2 Fix the FIXTURE(s) to the base.



3 After casting, check the hole (Φ1mm) of the FIXTURE(s) is not filled.



4 Insert straight stainless steel wire (Φ1mm) into the PLATE(s), and then fix the axis to the FIXTURE(s)'s hole on the base. Check the PLATE(s)'s position after that.



5 Take the PLATE(s) with axis off, and then cast and polish it separately. After that, put it on the base. Please finish the PLATE(s) on the base side flat. It's very important to move PLATE(s) smoothly.



Chowa Co., Ltd.



our website



video ad